

THE FARMER REPORT

Vol. 2 No. 2

A Periodic Newsletter of the Bee Family Centennial Farm Museum

Spring 2008

Grants and Improvements Bring Farm Closer to Opening

The Bee Family Centennial Farm received a grant to purchase and install CD and DVD equipment for the museum's multimedia exhibits. These exhibits will add another dimension to the learning experience as real stories from the farm's past will be played at four different locations. Also the interpretative introductory video documentary, *All Good Gifts: The Story of the Bee Family Farm*, will be shown to visitors upon entering the museum.



Recently installed in the main entrance building are exhibits about domestic life on the farm.



The Bee Farm also received an Historic Structures Assessment (HSA) Grant from the Colorado State Historical Fund. An HSA is an assessment of the condition of each structure within an historic site. It includes historical information about the property, an assessment of the proposed use, and an examination of all structural components, building systems, and interior and exterior materials and finishes. The assessment also addresses access by the disabled as well as building and zoning code compliance. The completed assessment will provide the museum with a plan that prioritizes work necessary to treat deficiencies and includes a preliminary estimate of the probable costs of construction. The HSA serves as the foundation for further State Historical Fund grants to restore the museum's historic buildings.

The museum recently submitted two grant applications for the installation of public restroom facilities; the grants should be awarded in May. However, even while awaiting these grants, the farm continues to seek donations of money and building materials for the restrooms. Please contact Liz Harrison, at (970) 482-9168, for a complete list of needed items.

Change of Use

A "change of use" is now complete for our main entrance building. Larimer County required the change of use so that the public could safely enter and use the building. We installed an additional doorway in the north end of the east elevation of the building as well as exit signs and emergency lighting. The museum also started the change-of-use process for the 1894 homestead house and the milk barn.

Opening Dates

Once the change of use has been completed for the three buildings listed above, Larimer County has agreed to allow the museum to be open two days a week, with the use of temporary, portable toilets and sanitation stations. The museum plans to be open on Fridays and Saturdays from 9 a.m. to 4 p.m. beginning on July 5. We will be open through the summer until the end of October. The suggested admission donation will be \$5 for adults and \$2 for children.

We've Been Busy

Over the winter we created displays for the main entrance building and throughout the museum. Last summer the farm purchased large display cases and tables that we are using to create smaller display cases for exhibits.

Group Visits

Would you and your group like your own, personalized visit to the farm? If you belong to a group that would like to experience our unique museum before or after its official opening, let us know. Call (970) 482-9168 to schedule an appointment.

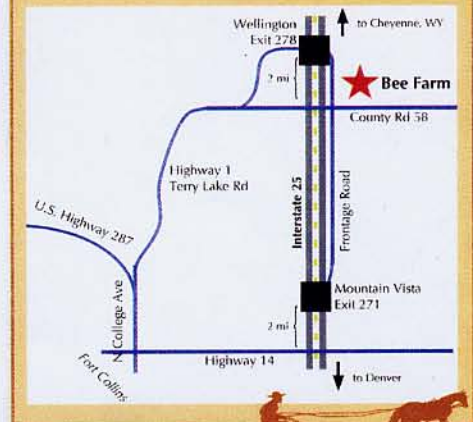


Bee Farm Online
www.beefamilyfarm.org

Spring 2008 Open Houses

We again invite you and your family to experience the Bee Farm during any of the times below.

DATE	TIME
April 265 to 8 p.m.
May 101 to 4 p.m.
May 245 to 8 p.m.





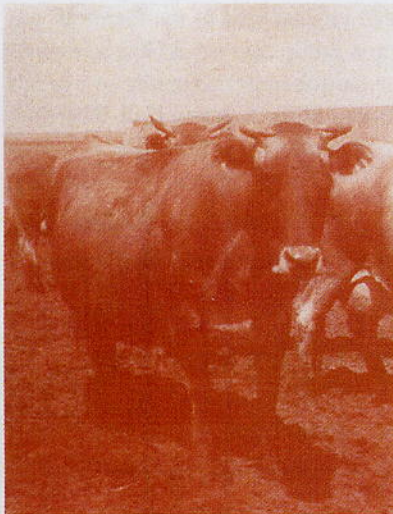
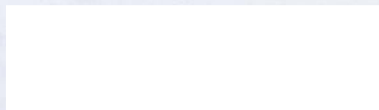
Bee Family Centennial Farm

4320 East Country Road 58
Fort Collins, Colorado 80524

(970) 482-9168 or (970) 482-2696



ADDRESS SERVICE REQUESTED



Please Support the Bee Family Centennial Farm Museum

Your support and contributions from the Bee family have enabled us to accomplish much at the Bee Family Centennial Farm Museum, but maintaining and restoring this facility is depleting family resources. We invite you to partner with us as we strive to open the farm to the public. We always appreciate your interest in and support for this project. Your tax-deductible contribution will enable us to make farm history come alive for the people of northern Colorado.